

Ph: 585-753-7380

Fax: 585-753-7374



ORDER BEFORE MARCH 10, 2015

**MONROE COUNTY SOIL & WATER
CONSERVATION DISTRICT**
Monroe County Fleet Center
145 Paul Road, Building #5 Rochester, NY 14624
www.monroecountyswcd.org

CONSERVATION TREE AND SHRUB PROGRAM 2015 CATALOG

This is your opportunity to improve the value of your property while developing wildlife habitat, minimizing erosion, and enjoying the beauty of the natural world!

What are seedlings, rooted clumps and dormant plants?

A seedling is a bare root tree or shrub. Our program carries two or three year old seedlings, depending on if it's a conifer or hardwood.

They are shipped while dormant, without a root ball or soil, but are covered in a moist material or root dipped to retain moisture. A rooted clump is a dormant plant in a clumped form. A dormant plant has no leafing but it is ready to grow!



Pictured above: A sample of what a one or two year old seedling may look like.

INSIDE:

- **Table of Contents** (Pg. 1)
- **Featured Species** (Pg. 2)
- **Detailed Information** for individual tree and shrub species (Pgs.3-6)
- **Groundcovers & Other Plants** (Pg. 7)
- **Conservation Multipacks** (Pgs. 8-11)
- **Seed Packets** (Pg. 12)
- **Handling & Planting Tips** (Pg.12)
- **Enhancement Items** (Pg. 13)
- **Ordering Details** (Pg. 14)
- **Overstock Sale** (Pg. 14)
- **ecopark Information** (Pg. 15)

MEETING YOUR REQUESTS:

We've made a few changes to this year's Tree, Shrub and Plant Program including:

- New native plant options to provide diversity for your projects. These new options are both beautiful and beneficial! Don't let the names fool you!
- Thirty-one individual tree, shrub, and plant species are now offered, with thirty-seven species in variety packs.
- Prices have dropped where possible to offer cost savings. For those interested in getting a quote for 500 (or more) contact our office.
- Look for these new species: Coralberry, American Hornbeam, Tulip Tree, Hackberry, and within our Multi-packs you'll find: Black Chokeberry and Purple Coneflower as new species. The Flowering Plant Multi-Pack, the Hummingbird and Honeybee Multi-Pack and the Bird and Butterfly Tree and Shrub Multi-Pack have all been updated.

The 2015 Tree and Shrub Program Catalog is available through the Conservation District's website at: www.monroecountyswcd.org

Please help conserve paper and choose to print only when necessary.



Follow us on Facebook!

TABLE OF CONTENTS

PLEASE NOTE: Sizes of stock may vary from year to year. Although we can not guarantee a size be sure to check the sizes listed on the order form and within this catalog when making your selections.

New Species Highlights2

Conifers

Balsam Fir	3
Colorado Blue Spruce.....	3
Concolor Fir.....	3
Douglas Fir	3
Eastern White Pine	3
Fraser Fir.....	3
Norway Spruce	3
Red Pine	3
White Cedar.....	4
White Spruce	4

Deciduous Shrubs

Blueberry	4
Buttonbush.....	4
NEW! Coralberry	4
Red Raspberry.....	4
Winterberry.....	5

Deciduous Trees

NEW! American Hornbeam (Ironwood)	5
American Sycamore	5
Black Cherry	5
Eastern Redbud.....	5
NEW! Hackberry.....	6
Red Oak	6
River Birch	6
Sugar Maple	6
Sweet Crabapple.....	6
Back by demand Tulip Tree	6
White Oak.....	6

Groundcovers

Larger Size Black-eyed Susan	7
Hosta	7
Myrtle	7
New York Fern	7
Larger Size Wild Geranium.....	7

Conservation Plant Multi-Packs

Bird & Butterfly Tree & Shrub Pack (#1).....	8	Updated!
Evergreen/Christmas Tree Pack (#2)	8	Lower Price!
Fern Plant Pack (#3)	9	Updated!
Hummingbird & Honey Bee Pack (#4)	9	Updated!
Native Flowering Tree & Shrub Pack (#5) ...	10	Updated!
Flowering Plant Pack (#6).....	10	
Riparian Tree & Shrub Pack (#7)	11	
Wildflower Plant Pack (#8).....	11	

Seed Packets

Bird & Butterfly Seed Mix.....	12
Erosion Control Seed Mix.....	12
Wildflower Seed Mix (full sun).....	12
Wildflower Seed Mix (partial shade)	12

Enhancement Items

Bat Box.....	13
Bluebird Nest Box.....	13
Fertilizer Tablets (Slow Release)	13
Flags.....	13
Milorganite	13
Rain Barrel Kit.....	13
Root Gel	13
4 Foot Stakes (Hardwood).....	13
Tree Shelters.....	13

Tree Distribution will be:

April 23rd and 24th, 2015

9:00am until 5:30pm

at the **Monroe County ecopark** located at

10 Avion Drive, Rochester, NY 14624

<http://monroecounty.gov/ecopark>

Don't Miss Our

Tree and Shrub Overstock Sale

April 25th, 2015 from 9:00am - 12:00pm
at the **Monroe County ecopark**.

This is a rain or shine event. Not all species may be available during the overstock sale. First come, first serve. To ensure that you receive the selections you want, we suggest customers pre-order.

Note: Printed copies of the 2015 Tree and Shrub Program catalog are available through our office, upon request, for a **FEE.*

American Hornbeam/Ironwood (*Carpinus caroliniana*)

This small single or multi-stemmed tree is also known as Musclewood for its visual resemblance to a muscle. It reaches 12-30 ft. with long slender spreading branches and a broad rounded crown. Drooping branches have bluish-green leaves that turn yellow-orange in the fall. A good selection for wildlife with songbirds, grouse, pheasants and fox eating the nutlets and deer browsing the twigs and foliage. It prefers part-shade to shade and moist, rich, deep soils.



Black Chokeberry (*Aronia melanocarpa*)

DON'T LET THE NAME FOOL YOU—This small, mound

shaped shrub has multiple stems and reddish-brown bark and glossy dark green leaves that turn crimson in the fall. As it grows to a maximum height of 3-12' it has white clusters of flowers that are followed by black-purple berries that attract many birds. It is also browsed by deer and rabbits. The berries can also be canned whole or juiced for jelly. Prefers part shade and moist, acid soils. Find this species in our multi-packs.



Coralberry (*Symphoricarpos orbiculatus*)

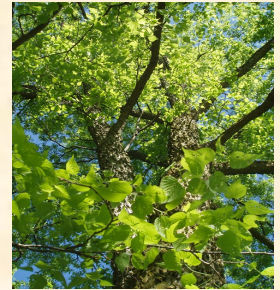
This small native, mound-shaped shrub has shredding bark on mature wood and brown to purple branches. Usually growing no taller than 4 feet, with smooth, green leaves, greenish-white flower clusters and remarkable clusters of coral-pink berries; it



attracts songbirds, ground birds and small mammals for food, cover and nesting. It prefers a site with shade/part shade and well drained soils. It also supports biological control, as it attracts predatory insects that prey upon pest insects!

Hackberry (*Celtis occidentalis*)

Commonly found along stream banks or flood plains, this tree varies in size from a shrub to a tree with a maximum height of 100 ft. It has a rounded crown of spreading branches with mature bark being covered with corky projections. Leaves are dull green and rough with orange—brown berries arranged in clusters. Uses include: furniture, crates and plywood but is also good for erosion control and attracting birds and butterflies. It prefers moist soils and can tolerate sun, part shade and shady sites.



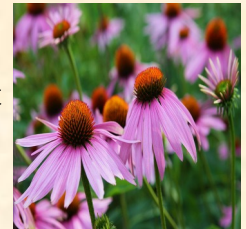
Fraser Fir (*Abies fraseri*)

Back by demand! This is a tree commonly used as a Christmas tree with wildlife benefits too. With a moderate growth rate reaching 50 feet it has shiny dark green needles with a distinctive bark and dense pyramidal shape. It grows in cool, moist soils.



Purple Coneflower (*Echinacea purpurea*)

Commonly used in gardens, this beautiful flower has uses important for wildlife food, cover and for roadside plantings. Growing to a maximum height of 36" it has a single showy flower head with pale purple pedals atop stout stems. It blooms in late spring to mid-summer with many bird species enjoying the seeds. Find this beauty in our Flower Plant Multi-pack.



Tulip Tree (*Liriodendron tulipifera*)

This beautiful tree is fast growing and a great street, shade or ornamental tree. Note its size before choosing your site since it commonly reaches more than 100 ft. It's used for furniture and veneer but has value aesthetically with a pyramidal form, resistance to insect and disease damage, distinct leaves and attractive flowers, and a striking yellow autumn color. The fruits provide food for squirrels in the fall and winter months and white-tailed deer often browse on the twigs. It prefers moderately moist, loose textured soils.



Balsam Fir

(Abies balsamea) **Native**
 Slow growth rate, up to 60 feet.
 Prefers silt loams, but will grow in most soils and is shade tolerant.
 Primarily used for Christmas trees, lumber, and wildlife habitat.
 Flat needles that are strongly curved. 8-16" seedling.
 Price: \$15/10 pack; \$65/50 pack; \$95/100 pack

**Eastern White Pine**

(Pinus strobus) **Native**
 Rapid growth rate, up to 150 feet.
 Prefers moist to well-drained soils with partial to full sun, but is adaptable to adverse soil conditions. Primarily used for lumber and Christmas trees. Long, slender, soft, blue-green needles in clusters of five. 15"+ seedling.
 Price: \$11/10 pack; \$45/50 pack; \$76/100 pack

Colorado Blue Spruce

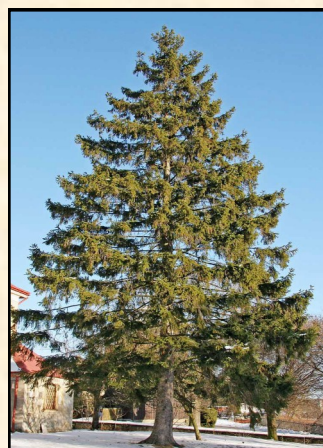
(Picea pungens) **Native**
 Slow growth rate, up to 100 feet.
 Prefers moist, acidic, well-drained soils with partial to full sun.
 Primarily used for screens, windbreaks, and Christmas trees.
 Sharp needles with a bluish tint. 15"+ seedling.
 Price: \$11/10 pack; \$44/50 pack; \$80/100 pack

**Fraser Fir**

(Abies fraseri) **Non-Native**
 This stately tree is commonly used for Christmas tree production and wildlife benefits. With a moderate growth rate reaching 50 ft., shiny dark green needles, a distinctive bark and dense pyramidal shape it is a popular choice. It grows in cool, moist soils. 8-14" seedling.
 Price: \$14/10 pack; \$56/50 pack; \$95/100 pack

Concolor Fir

(Abies concolor) **Native**
 Slow to moderate growth rate, up to 120 feet. Prefers deep, permeable soils with partial to full sun. Primarily used for Christmas trees and lumber.
 Curved silver/green needles. 12-24" seedling.
 Price: \$15/10 pack; \$60/50 pack; \$96/100 pack

**Norway Spruce**

(Picea abies) **Non-Native**
 Slow to moderate growth rate, up to 130 feet. Prefers moist, acidic, well-drained soils with partial to full sun. Does not tolerate poorly drained soils. Primarily used for windbreaks, ornamental plantings, and sometimes Christmas trees. Dark green needles. 15"+ seedling.
 Price: \$12/10 pack; \$47/50 pack; \$80/100 pack

Douglas Fir

(Pseudotsuga menziesii) **Native**
 Slow to moderate growth rate, up to 200 feet. Prefers moist, well-drained, slightly acidic, rich, cool soils with partial to full sun. Does not tolerate dry or poorly drained soils. Primarily used for lumber, but also used for Christmas trees, windbreaks, and screens. Thin, flattened needles with white stomata underneath. 15"+ seedling.
 Price: \$11/10 pack; \$45/50 pack; \$76/100 pack

**Red Pine**

(Pinus resinosa) **Native**
 Rapid growth rate, up to 80 feet.
 Prefers well-drained, dry, highly acid, sandy soils with full sun.
 Primarily used for lumber, but also Christmas trees, wildlife habitat, and windbreaks. Soft long and slender needles in clusters of two. 15"+ seedling.
 Price: \$12/10 pack; \$47/50 pack; \$76/100 pack

CONIFERS

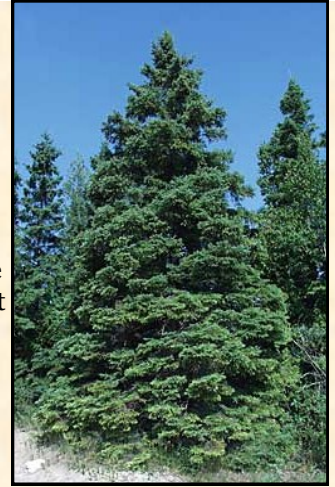


White Cedar

(Thuja occidentalis) **Native**
 Slow growth rate, up to 50 feet. Prefers moist, well-drained, loamy soils in full sun, but very adaptable to adverse conditions, such as heat, drought, humidity and pollution. Primarily used for lumber, screens and wildlife habitat. Flattened needles that are aromatic. This species is also known as American arborvitae.
 10-20" seedling.
 Price: \$14/10 pack; \$60/50 pack; \$90/100 pack

White Spruce

(Picea glauca) **Native**
 Slow to moderate growth rate, up to 100 feet. Prefers moist, well-drained soils and is shade tolerant. Not tolerant to pollution, winter salt spray, dry soils, and heat. Primarily used for lumber, windbreaks, Christmas trees, screens and wildlife habitat. Green needles, with pungent odor when crushed
 10-15" seedling.
 Price: \$12/10 pack; \$45/50 pack; \$76/100 pack



DECIDUOUS SHRUBS

Blueberry

(Vaccinium corymbosum)

Native

Moderate growth rate, up to 12 feet. Prefers a wide variety of soil conditions with saturation. This is a shade tolerant species. Primarily used for fruit production, ornamental, and wildlife. White-pinkish flowers bloom from February to June and 1/2" blue berries fruiting from April to October. Leaves turn red in fall.
 9-12" seedling.

Price: \$56/10 pack; \$190/50 pack



Coralberry (NEW!)

(Symphoricarus orbiculatus)

Native

This small native, mound-shaped shrub has shredding bark and brown to purple colored branches. This unique plant reaches a maximum of 4 feet, with smooth, green leaves, greenish-white flower clusters and coral-pink berries. A great wildlife plant, it attracts songbirds, ground birds and small mammals for food, cover and nesting. It prefers a site with shade/part shade and well drained soils.

12-18" seedling.

Price: \$15/10 pack; \$62/50 pack



Buttonbush

(Cephalanthus occidentalis)

Native

Moderate growth rate, up to 12 feet. Prefers poorly to somewhat poorly drained soils and can tolerate shady conditions. Flowers grow in dense, round, 1 inch diameter clusters which bloom from June -September. Butterflies, hummingbirds and bees are attracted to the plant for its nectar, with waterfowl and shoreline birds consuming the seeds and using this species for cover.

12-18" seedling.

Price: \$14/10 pack; \$56/50 pack



Red Raspberry

(Rubus latham) **Native**

Rapid growth rate, up to 4 feet. Prefers moist, well-drained soils with full sun. Primarily used as a food resource for humans and wildlife. White flowers bloom from May to July, forming juicy red berries in July.

12-18" seedling.

Price: \$35/10 pack; \$130/50 pack

DECIDUOUS SHRUBS (CONTINUED)

Winterberry

(*Ilex verticillata*) **Native**

Slow growth rate, up to 15 feet. Prefers moist soils and is shade tolerant. Red to orange fruit maturing by late summer and remains attached to the plant through the winter months. The fruit are eaten by many small mammals and at least 48 different species of birds.

14-20" seedling.

Price: \$14/10 pack; \$54/50 pack



DECIDUOUS TREES

American Hornbeam/ Ironwood

(*Carpinus caroliniana*) **Native**

This is a small single or multi-stemmed tree reaching 12-30 ft. with long slender spreading branches and a broad rounded crown. It's drooping branches have bluish-green leaves turning yellow-orange each fall. A good selection for wildlife with songbirds, grouse, pheasants and fox eating the nutlets and deer browsing the twigs and foliage. It prefers part-shade to shade and moist, rich, deep soils.

12-18" seedling.

Price: \$15/10 pack; \$63/50 pack



Black Cherry

(*Prunus serotina*) **Native**

Rapid growth rate, up to 80 feet. Prefers moist, rich, moderately-well drained soils, but will tolerate a variety of soil types, textures, and drainages with partial or full sun. Primarily used for lumber and for habitat & food resource for wildlife. Flowers are small and white, becoming 3/8" black cherries. Crushed foliage and bark have a cherry-like odor and a bitter taste.

18-24" seedling.

Price: \$13/10 pack; \$55/50 pack

American Sycamore

(*Platanus occidentalis*) **Native**

Rapid growth rate, up to 100 feet. Prefers moist, deep, rich soils with full sun, but is very adaptable to a dry, wet, compacted, and poor soil conditions. Primarily used for pulpwood and wildlife habitat. Has a large, broad, open crown, with crooked branches. Bark is attractively mottled.

18-24" seedling.

Price: \$13/10 pack; \$55/50 pack



Eastern Redbud

(*Cercis canadensis*) **Native**

Slow growth rate, growing up to 15 to 30 feet tall. Very drought resistant. One of the first trees to bloom in spring, Eastern Redbud produces a vibrant display of pink flower clusters that cover the entire tree.

12-18" seedling.

Price: \$14/10 pack; \$54/50 pack

Hackberry (NEW!)*(Celtis occidentalis)* **Native**

Commonly found along stream banks or flood plains, this tree varies in size from a shrub to tree with a maximum height of 100 ft. With a rounded crown of spreading branches and older bark being covered with corky projections it is unique and beautiful. Leaves are green and rough with orange-brown clustered berries. Uses include: habitat for birds and butterflies, furniture, crates/plywood, and erosion control. It prefers moist soils and tolerates sun, part shade and shady sites.

12-18" seedling. Price: \$12/10 pack; \$48/50 pack

**Sweet Crabapple***(Malus coronaria)* **Native**

Moderate growth rate, up to 30 feet. Prefers poorly drained to moderately drained soils, and is tolerant of partial shade. Known for very fragrant, white to white-pink flowers, blooming from May to June. One inch sized yellowish-green crabapples ripen in the fall and wildlife use as a food resource for butterflies and bees during the bloom and mammals once the fruit ripens. 12-18" seedling.

Price: \$15/10 pack; \$63/50 pack

Red Oak*(Quercus rubra)* **Native**

Moderate growth rate, up to 80 feet. Prefers deep, fertile, well-drained, finely textured soils, but very adaptable to many different soil types, textures, and drainages with partial sun to full sun (partial shade tolerant in youth). Primarily used for lumber and habitat & food resource for wildlife. One inch in diameter, bitter acorns are heavily predated upon by mammals. 12-24" seedling.

Price: \$12/10 pack; \$52/50 pack

**Tulip Tree***(Liriodendron tulipifera)* **Native**

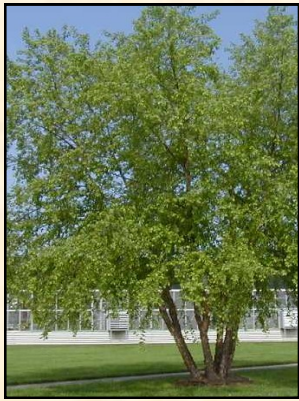
Rapid growth rate, up to 120 feet. Prefers moist, deep, well-drained, loose textured soils with partial to full sun. Does not tolerate very dry or very wet soils. Primarily for habitat & food resource for wildlife. Has a long, straight, self-pruning trunk with a narrow crown. Produces large, solitary, showy flowers with six yellow-green petals in late May through June. 18-24" seedling.

Price: \$14/10 pack; \$55/50 pack

River Birch *(Betula nigra)***Native**

Rapid growth rate, up to 40-70 feet tall. Tolerates poorly to well drained soils but prefers partially drained soils with full to part sun. The exfoliating gray-brown to ivory to copper colored bark makes this tree a popular ornamental and landscaping tree. Planted for erosion control along streams, this tree also provides habitat and food for mammals and birds. 18-24" seedling.

Price: \$13/10 pack; \$55/50 pack

**White Oak***(Quercus alba)* **Native**

Slow growth rate, up to 100 feet. Prefers coarse, deep, moist, well-drained, slightly acid soils with partial to full sunlight, but very adaptable to many different soil types, textures and drainages. Primarily for lumber and habitat & food resource for wildlife. Acorns are oval, with 1/4 covered with a cap which drops off at maturity. Bark is whitish or light gray, varying from scaly to ridged and furrowed. 12-18" seedling.

Price: \$12/10 pack; \$50/50 pack

Sugar Maple*(Acer saccharum)* **Native**

Slow growth rate, up to 150 feet. Prefers rich, well-drained soils and is shade tolerant. Will tolerate drier upland woodland soils. Primarily used for commercial sap production and habitat & food resource for wildlife. Leaves are deciduous, opposite, and are long-petioled. Fruits are paired, winged nutlets. As our New York State tree it provides a beautiful display of fall color.

18-24" seedling.

Price: \$14/10 pack; \$55/50 pack



Black-eyed Susan (Larger Size!)

(*Rudbeckia hirta*) **Native**

Perennial with a rapid growth rate, up to 3 feet. Prefers well drained to somewhat poorly drained soils in full sun. Yellow flowers with dark brown spherical centers bloom from June to September.

Not only is this species planted for landscaping purposes, but Black-eyed Susans are an important critical area seeding used for erosion control purposes. Dormant rooted clumps.

Price: \$16/10 pack; \$66/50 pack



Myrtle or Common Periwinkle

(*Vinca minor*) **Non-native**

Moderate growth rate, up to 1/2 a foot. Prefers well drained to poorly drained soils that are medium textured to fine textured with ample moisture with partial shade. Will tolerate full sun. Primarily used for erosion control. This perennial evergreen ground cover is winter hardy and produces small blue flowers indeterminately from April to September.

Rooted clumps.

Price: \$32/50 pack; \$58/100 pack



Hosta

(*Fortunei hyacinthina*) **Non-native**

Rapid growth rate, up to 2 feet. Prefers moist, well drained soils that are slightly acidic with partial to full shade. This species blooms in mid to late summer. Flowers are pale lavender to purple.

Dormant rooted clumps.

Price: \$15/10 pack; \$50/50 pack



New York Fern

(*Thelypteris noveboracensis*) **Native**

Moderate growth rate, up to 1.5 feet in height. Prefers well drained to imperfectly moderately drained soils in partial to full shade. This fern is straw-colored, shading to green, scales tan to reddish brown. Dormant rooted clumps

Price: \$16/10 pack; \$60/50 pack



Wild Geranium (Larger Size!)

(*Geranium maculatum*) **Native**

Perennial with a moderate growth rate, up to 2 feet. Prefers moderately well drained to somewhat poorly drained with full sun to part shade. Herbaceous wildflower blooms from April to May. The pale pink to deep pink flowers attract butterflies and makes for a great ornamental flower. Dormant rooted clumps

Price: \$16/10 pack; \$66/50 pack

Bird & Butterfly Tree & Shrub Multi-Pack #1—

Plant pack contains 10 plants with two of each species with dormant plants & seedlings 12-24". **Price: \$18.00 per packet**

Butterflybush

(*Buddleja davidii*) **Non-Native (12-24")**

NEW MIX!!

Rapid growth rate, up to 12 feet. Prefers well-drained, dry soils with full sun. Will not tolerate saturated soils. Primarily used as a habitat & food resource for wildlife. Fragrant purple, white, pink, or red flowers attract butterflies. Dies back somewhat over the winter. Please Note: stock is in a dormant state when distributed to customers. Once planted it may take up to 12 weeks for new growth to occur, depending on sun exposure. Most stock blooms in its first season!

Black Chokeberry

(*Aronia melanocarpa*) **Native (12-18")**

This small, mound shaped shrub has multiple stems and reddish-brown bark and glossy dark green leaves that turn crimson in the fall. As it grows to a maximum height of 3-12' it has white clusters of flowers that are followed by black-purple berries attracting many birds. It is also browsed by deer and rabbit. Don't let the name fool you—The berries can be canned whole or juiced for jelly! This shrub prefers part shade and moist, acid soils.

Dense Blazing Star

(*Liatris spicata*) **Native (dormant plant)**

Slow growth rate, up to 4 feet. Often found in moist, open fields and sedge meadows, it thrives in full sun and moist soils, and can tolerate partial shade. Linear, grass-like leaves extend up the stem to showy purple flower clusters. Flowers bloom from July-September. An excellent garden plant that attracts both birds and butterflies.

Ninebark

(*Physocarpus opulifolius*) **Native (18-24")**

Slow growth rate, up to 10 feet. Prefers moist, acidic, sandy soils, but will tolerate gravel bars, and rocky slopes and bluffs along streams with full sun. Primarily used as a habitat & food resource for wildlife. Flowers are an excellent nectar source, and fruits are eaten by many species of birds. Ninebark is an endangered species. Fruit is shiny, red at maturity, glabrous or hairy, in clusters of 3-5 per flower. This species flowers in May-July and fruits in May-July.

Lilac

(*Syringa vulgaris*) **Non-Native (18-24")**

Moderate growth rate, up to 20 feet. Prefers neutral to slightly acidic soils with full sun. This species does not tolerate poorly drained soils. Provides habitat and food resources for wildlife, and the flowers are used in making dyes. The flowers are mostly white, lilac, or purple and pleasantly fragrant.

Evergreen/Christmas Tree Multi-Pack #2—

Plant pack contains 10 plants with two of each species. Seedlings are 6-16"

Price: \$15.00 per packet

LOWER PRICE!

Colorado Blue Spruce

(*Picea pungens*) **Native (9-15")**

Slow growth rate, up to 100 feet. Prefers moist, acidic, well-drained soils with partial to full sun. Primarily used for screens, windbreaks, and Christmas trees. Sharp needles with a bluish tint.

Douglas Fir

(*Pseudotsuga menziesii*) **Native (10-16")**

Slow to moderate growth rate, up to 200 feet. Prefers moist, well-drained, slightly acidic, rich, cool soils with partial to full sun. Does not tolerate dry soils and poorly drained soils. Primarily used for lumber, but also used for Christmas trees, windbreaks, and screens. Thin, flattened needles with white stomata underneath.

White Spruce

(*Picea glauca*) **Native (9-15")**

Slow to moderate growth, up to 100 feet. Prefers moist to well-drained soils and is shade tolerant. Not tolerant to pollution, winter salt spray, dry soils, and heat. Primarily used for lumber, windbreaks, Christmas trees, screens and wildlife habitat. Green needles, with pungent odor when crushed.

Eastern White Pine

(*Pinus strobus*) **Native (6-12")**

Rapid growth, up to 150 feet. Prefers moist to well-drained soils with partial to full sun, but very adaptable to adverse soil conditions. Primarily used for lumber and Christmas trees. Long, slender, soft, blue-green needles in clusters of 5.

Fraser Fir

(*Abies fraseri*) **Native (8-14")**

Moderate growth rate, up to 55 feet. Prefers moist, well-drained soils and is shade tolerant. Primarily used for Christmas trees due to its ability to hold its soft needles for a long time after being cut. Shiny dark green needles, bark has many resin blisters.

Fern Plant Variety Pack #3—

Plant pack contains 10 plants with two of each species. All of these ferns are protected plants in New York. Plants are in dormant, rooted clumps.

Price: \$18.00 per packet

Cinnamon Fern

(Osmunda cinnamomea) **Native**

Moderate growth rate, up to 5 feet in height. Prefers poorly drained, wet acid soils and in partial to full shade. This perennial fern gets its name because of the cinnamon-colored hairs covering leaf stalks and reproductive bodies.

Christmas Fern

(Polystichum acrostichoides) **Native**

Moderate growth rate, up to 2 feet in height and 2 feet in width. Prefers moist, well-drained and acidic soils in partial to full shade. This perennial fern is evergreen, dark green, lanceolate, once-pinnate, with a characteristic "ear-like" lobe pointing upwards. Most commonly found in woodlands.

Ostrich Fern

(Athyrrium pycnocarpon) **Native**

Moderate growth rate, up to 3 feet in height. Prefers moist soils with partial to full shade. This fern has a smooth lance shaped pinnae and has sharp pointed tips that are reduced at the base.

Maidenhair Fern

(Adiantum pedatum) **Native**

Moderate growth rate, up to 2.5 feet in height and 1.5 feet in width. Prefers moist, acidic soils, but will tolerate medium well-drained soils in partial shade to full shade. This perennial fern is finely-textured, with somewhat frilly fronds which have curved stalks and are palmately-divided.

New York Fern

(Thelypteris noveboracensis) **Native**

Moderate growth rate, up to 1.5 feet in height. Prefers well-drained to imperfectly-drained soils in partial to full shade. This fern is straw-colored, shading to green, scales tan to reddish brown.

Hummingbird & Honeybee Plant Multi-Pack #4—

Plant pack contains 10 plants with two of each species with dormant plants and seedlings that are 12-24".

Price: \$18.00 per packet

Black Chokeberry

(Aronia melanocarpa) **Native (12-18")**

This small, mound shaped shrub has multiple stems and reddish-brown bark and glossy dark green leaves that turn crimson in the fall. As it grows to a maximum height of 3-12' it has white clusters of flowers that are followed by black-purple berries attracting many birds. It is also browsed by deer and rabbit. Don't let the name fool you—The berries can be canned whole or juiced for jelly! This shrub prefers part shade and a moist, acid soils

Larkspur

(Delphinium) **Native (dormant plant)**

Moderate growth rate, up to 4 feet. Prefers moderately well drained to somewhat poorly drained soils and with full to partial sun conditions. Pale and dark blue, purple, pink, or white flowers bloom in spring and early summer depending on the variety. This annual self seeds in most gardens, coming back year after year.

Wild Red Columbine

(Aquilegia) **Native (dormant plant)**

Rapid growth rate, up to 3 feet. Prefers well drained to moderately well drained soils, in full sun to partial shade conditions. Yellow, red, pink, purple or blue, single or multi colored flowers bloom in early spring to summer.

Juneberry

(Amelanchier arborea) **Native (18-24")**

Slow growth rate, up to 36 feet. Also known as Serviceberry, it grows well in partial shade to full sun, and prefers moist, but well-drained soils. Will also grow on dry sites. Among the first of the early spring trees and shrubs to bloom, Juneberry flowers in March-May, and fruiting June-August. At least 40 different song bird species are known to feed on the fruit of this species.

Jacob's Ladder

(Polemonium) **Native (dormant plant)**

Moderate growth rate, up to 3 feet. Prefers moderately well drained to somewhat poorly drained soils in full to part sun. White, blue, pink, yellow flowers bloom in spring through early summer.

NEW MIX!!

Native Flowering Tree and Shrub Multi-Pack #5—

Plant pack contains 10 plants with two of each species. Seedlings are 12-24”.

Price: \$18.00 per packet

Juneberry

(*Amelanchier arborea*) **Native (18-24”)**

Slow growth rate, up to 36 feet. Also known as Serviceberry, it grows well in partial shade to full sun, and prefers moist, but well-drained soils. Will also grow on dry sites. Among the first of the early spring trees and shrubs to bloom, Juneberry flowers in March-May, and fruiting June-August. At least 40 different song bird species are known to feed on the fruit of this species.

Spicebush

(*Lindera benzoin*) **Native (12-18”)**

Slow growth rate, up to 12 feet. Prefers moist, moderately to poorly drained soils with partial shade to full sun. Primarily used for habitat & food resource for wildlife. Twigs and leaves are spicy-fragrant when crushed. Produces scarlet fruits (1/3” long) in early autumn.

American Cranberry

(*Viburnum trilobum*) **Native (18-24”)**

Slow growth rate, up to 10 feet. Prefers moist, well-drained soils, but is adaptable to a variety of soil conditions. Not shade tolerant. Primarily used for medicinal purposes by Native Americans, and as a habitat & food resource for wildlife. Fruit is berry-like, bright red, 8-10mm in diameter is collected in late August to early September, when slightly under-ripe (and sour), and used in sauces, jellies, and juices.

Tulip Tree

(*Liriodendron tulipifera*) **Native (18-24”)**

Rapid growth rate, up to 120 feet. Grows best in moderately moist, deep, well drained, loose textured soils. Does not do well in overly dry or overly saturated soils, or in shade. This species has many benefits including: rapid growth rate, resistance to insect/disease damage, attractive flowers, visually pleasing autumn colors, and it provides food for wildlife. A member of the magnolia family, the tulip tree produces light greenish-yellow flowers from April-June.

White Flowering Dogwood

(*Cornus florida*) **Native (18-24”)**

Moderate growth rate, up to 30 feet. Prefers rich, well-drained, acidic soils and is shade tolerant. Primarily used for habitat & food resource for wildlife. White flowers bloom in the spring and bright red berries ripen in fall and winter. This native is also a protected species.

Flowering Plant Multi-Pack #6—

Plant pack contains 10 plants with two of each species. Plants are dormant rooted clumps.

NEW MIX!!

Price: \$18.00 per packet

Blue King Iris

(*Iridaceae Iris sibirica*) **Non-native**

Growth rate unknown, up to 2.5 feet. Prefers moist, well-drained soils with full sun to partial shade. This species blooms in late spring to early summer with flowers turning violet blue, with gold and white markings on the falls and bold veining. This species is less likely to be eaten by deer.

Snow Queen Iris

(*Iridaceae Iris sibirica*) **Non-native**

Moderate to rapid growth rate, up to 3 feet in height. Prefers moist, well-drained soils with full sun to partial shade. This species has medium flowers that are snow white and are less likely to be eaten by deer.

Autumn Joy Sedum

(*Sedum spectabile*) **Non-native**

Growth rate unknown, up to 2 feet in height and 1 foot width. Prefers moist, well-drained soils, with full sun or light shade. It is extremely tolerant to heat and drought. Flowers bloom in late summer or autumn, producing deep pink flowers at first, and then turning pinkish bronze to eventually copper-red to reddish to bronze flowers.

Black-eyed Susan

(*Rudbeckia hirta*) **Native**

A perennial with a rapid growth rate, up to 3 feet. Prefers well drained to somewhat poorly drained soils in full sun. Yellow flowers with dark brown spherical centers bloom from June to September. Not only is this species planted especially for landscaping, but also as an important critical area seeding used for erosion control purposes. Dormant rooted clumps.

Purple Coneflower

(*Echinacea purpurea*) **Native**

Commonly used in gardens, this beautiful flower has uses important for wildlife food, cover and for roadside plantings too. Growing to a maximum height of 36” it has a single showy flower head with pale purple pedals atop stout stems. It blooms in late spring to mid-summer with many bird species enjoying the seeds.

Riparian Tree & Shrub Multi-Pack #7—

Plant pack contains 10 plants with two of each species. Seedlings are 18-24”.

Price: \$18.00 per packet

Red Osier Dogwood

(Cornus sericea) **Native (18-24”)**

Moderate growth rate, but quick to establish, commonly grows from 3-10 feet. Is adapted to growing well in moist soils (especially along streams), and can grow in shade, partial shade, and full sun. White flowers bloom in March-May, and red branches retain their color throughout the year. An excellent specie for soil/bank stabilization and erosion control.

Buttonbush

(Cephalanthus occidentalis) **Native (18-24”)**

Moderate growth rate, and grows up to 6-12 feet. It is well suited to areas with wetter soils or poor drainage, and also grows well in the shade. An attractive ornamental plant, the white/pink Buttonbush flowers bloom from June-September and resemble round pincushions. Seeds are consumed by water fowl and Buttonbush also serves as a honey plant for pollinators.

Ninebark

(Physocarpus opulifolius) **Native (18-24”)**

Slow growth rate, up to 10 feet. Prefers moist, acidic, sandy soils, but will tolerate gravel bars, and rocky slopes and bluffs along streams with full sun. Primarily used as a habitat & food resource for wildlife. Flowers are an excellent nectar source, and fruits are eaten by many species of birds. Ninebark is an endangered species. Fruit is shiny, red at maturity, glabrous or hairy, in clusters of 3-5 per flower. This species flowers in May-July and fruits in May-July.

Streamco Willow

(Salix purpurea) **Non-native (18-24”)**

Rapid growth rate and resilient stems grow up to 16 feet in height. Suited for a variety of soil types, and grows in imperfectly-drained to well-drained soils and is shade tolerant. Often used in bioengineering and to control erosion along streams.

River Birch

(Betula nigra) **Native (18-24”)**

Rapid growth rate, up to 40 to 70 feet tall. Prefers poorly drained to well drained soils and with partial sun to full sun. The exfoliating gray-brown to ivory to copper colored bark makes this tree a very popular ornamental and landscaping tree. Planted for erosion control along streams, this tree also provides habitat and food for mammals and birds.

Wildflower Plant Multi-Pack #8—

Plant pack contains 10 plants with two of each species. Plants are dormant rooted clumps.

Price: \$18.00 per packet

Wild Geranium

(Geranium maculatum) **Native**

Moderate growth rate, and grows 1-3 feet. Growing well under a variety of conditions, wild geranium prefers partly shady to shady areas. A showy species; white, pink or purple flowers bloom from March-July. Seeds provide food resources for both birds and mammals.

Red Trillium

(Trillium erectum) **Native**

Slow growth rate, up to 1.5 feet. Prefers rich, moist, well-drained soils with partial to full shade. This perennial flower produces variable colored flowers ranging from red, white, maroon, pink, yellow, and purplish red. Flowering in spring this species has broadly oval to almost diamond shaped leaves.

Jack in the Pulpit

(Arisaema triphyllum) **Native**

Fast growth rate, and grows up to 1-3 feet tall. Easy to cultivate and requiring very little care, this specie thrives under a variety of conditions. Its has a distinctive, cylindrical, hooded flower that blooms green with purple/brown stripes from May-June.

Cardinal Flower

(Lobelia cardinalis) **Native**

A moderate growth rate, and grows up to 1-6 feet tall. Growing well in full sun, part shade, shade, it prefers moist/wet soils at all times. Brilliant red flowers bloom from May-October. Over-picking has led to scarcity of this plant in some areas, and its long, tubular flowers are often difficult for insects to navigate. Cardinal Flowers therefore depends on hummingbirds for pollination, and as such provide a mutually beneficial source of food for the tiny, pollinating hummingbird.

Bluebells

(Mertensia virginica) **Native**

Moderate growth rate, up to 2 feet. Prefers rich, moist soils near streams with partial to full shade. Commonly found in wooded flood plains. Flowering in early spring this species will produce bluish pink flowers and is considered one of the most beautiful native flowers.

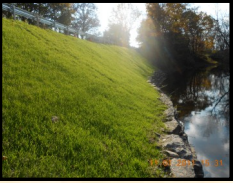
SEED PACKETS



Bird & Butterfly Mix: This mix is a great choice for those looking to diversify habitat for birds and butterflies, while beautifying areas. A good companion to the variety packets on page 10. Needs full sun and covers 1300 sq. ft. (Species Included; *Annual Mallow, Bachelor's Button, Cosmos, Foxglove, Globe Gilia, Indian Blanket, Lance-Leaved Coreopsis, Ox-Eyed Daisy, Phlox, Purple Coneflower, Sweet William Catchfly, Tall Sweet Alyssum, and Yarrow*).

\$14.00 per 4oz. packet.

Seeding rate: 7oz./1000 sq. ft. (roughly 9.5lbs/acre). (Cosmos pictured left)



Erosion Control Seed Mix: This is a specialty mix of plants and grasses for erosive sites and steep slopes or banks. Now twice as much! Approx. 14 oz. - covers 1000 sq. ft. (Species included: *Creeping Red Fescue, Common White Clover, Perennial Ryegrass*).

\$11.00 per packet.

Seeding Rate: 14oz/1000 sq. ft.



Wildflower Seed Mix (Full Sun): The perfect colorful seed mix for sunny spots. This mix includes annuals and perennials and covers 300 sq. ft. per oz. A variety of flowers bloom throughout the season. (Species Included: *Annual Mallow, Arroyo Lupine, Baby Blue Eyes, Baby Snapdragon, Black-Eyed Susan, Blanketflower, Blue Flax, Catchfly, Clarkia, Dame's Rocket, Evening Primrose, Farewell-to-Spring, Foxglove, Globe Gilia, Lance-Leaved Coreopsis, Phlox, Plains Coreopsis, Prairie Aster, Purple Coneflower, Scarlet Flax, Siberian Wallflower, Upright Prairie Coneflower, Yarrow*).

\$11 per 4oz. packet.

Seeding rate: 2 oz./1000 sq. ft.



Wildflower Seed Mix (Part Shade): This is a great mix to add color to partly shaded areas of your landscape. Includes annuals and perennials and covers 300 sq. ft. per oz. A variety of flowers bloom throughout the season. (Species Include: *Sweet Alyssum, Dwarf Columbine, Clarkia, Cynoglossum, Coreopsis, Rocket Larkspur, Sweet William Pinks, Foxglove, Purple Coneflower, Baby's Breath, Dames Rocket, Candytuft, Baby Blue Eyes, Corn Poppy, Black-Eyed Susan*).

\$11 per 4oz. packet.

Seeding Rate: 2oz./1000 sq. ft.

***Note: All above seed mix packets include sales tax in prices listed.**

SEEDLING CARE & PLANTING TIPS - IMPORTANT!

- ⇒ Be sure to temporarily store your seedlings in a dark, cool area.
- ⇒ Once in storage, check the moisture content of each bundle and sprinkle with water if necessary. **IF YOU PLAN TO SOAK YOUR SEEDLINGS—DO NOT SOAK THEM MORE THAN 30 MINUTES.**
- ⇒ Plant your seedlings as soon as possible. This reduces mortality rates.
- ⇒ Use a site that's been properly prepared. Sod should be removed and be sure to consider sun and shade preferences for each plant, as well as, soils, drainage and pH before planting.
- ⇒ Plant your seedlings at the proper depth and cover with mulch or other weed deterrent.
- ⇒ Water your seedlings and plants often.
- ⇒ Following these tips can greatly increase plant survival rates.

Do you need fertilizer? A soil test can tell you what, if any, nutrients your soil needs. Call your local Cornell Cooperative Extension office for information. In Monroe County, contact Cooperative Extension @ 585-461-1000.

OTHER ENHANCEMENT ITEMS

Bat Box Roosting Housing	Provide a home for a small brown bat or other species of bats. Little brown bats are insectivores, eating moths, wasps, beetles, gnats, mosquitoes, midges and mayflies, among others. Since many of their preferred meals are insects with an aquatic life stage, such as mosquitoes, they prefer to roost near water.	\$15.00 each
Bluebird Nest Box	Provide a home for our State Bird! Order with your spring plants or stop in anytime. Ask for mounting guidelines when you pick up your nest box.	\$15.00 each
Fertilizer: Slow Release Tablets	Slow release fertilizer tablets last for approximately 2 years. Typically one tablet is used per tree/shrub planted.	\$1.00/10 tablets
Flags	Use these brightly colored, 3 ft. wire flags to mark your planting site. Marked planting sites are less likely to be mowed over! Each bundle includes 100 flags.	\$14.00/bundle
Fertilizer: Milorganite	100% organic fertilizer for trees and shrubs. EPA approved (N-P-K) 6-2-0 plus micronutrients. Benefits local water quality with low Phosphorous. You may even find that the odor deters deer!	\$15.00/ 36 lb. bag
Rain Barrel Kit <i>(Assembly Required)</i>	Help conserve water by adding a rain barrel to your gutter system. Rain barrel holds 55 gallons of water that can be used to water your lawn or wash the car. Rainbarrels contained in these kits are recycled. Assembly of the rainbarrel is required by connecting a spigot to the bottom and creating an orifice to receive water from downspouts on the top.	\$45.00 each
Root Gel	A fine powder product that, when mixed with water, forms a gel consistency ideal for bare root dipping. Helps to decrease seedling stress in drought conditions. Each packet treats approximately 500 seedlings.	\$4.00 for 3oz. pkt.
4 Foot Stakes	Use these 4 ft. hardwood stakes to mark your planting site. Marked planting sites are less likely to be mowed over!	\$15 (10 pk.)
Tree Shelters	Includes a 4 ft. bio-degradable tube, stake and bird net. These help to protect hardwood trees from wildlife damage while speeding up growth rate.	\$8 each \$70 (10 pk.) \$325 (50 pk.)

***Note: All above items include sales tax in prices listed.**

Did You Know? One known source of pollution is phosphorous from fertilizers that we use on lawns. Phosphorous is a pollutant of concern in our local water bodies. We are pleased to offer **Milorganite**, a low phosphorous fertilizer that may also help deter deer! Phosphorous free fertilizer is now available at most stores.

IMPORTANT ORDERING INFORMATION
PLEASE READ

Page 14

All seedlings are bare root. Stock may be used for wildlife habitat, erosion control, reforestation, windbreaks, landscaping, Christmas trees, etc. All trees and shrubs sold are to be used for the above conservation practices. All trees and shrubs are sold with the understanding that they will not be removed from the planted site with roots attached for resale. Orders are filled on a first-come, first-serve basis, while supplies last. The District reserves the right to refund payment on species and items if they should become unavailable. Because the District cannot check a planting location, nor guard against improper handling and planting procedures or weather related problems, the District will not be responsible for replacement or refunds of orders after distribution. Returned checks WILL NOT be reprocessed. Bounced checks will incur a \$20 fee. In such situations, the only forms of payment accepted will be money order or cash.

***Complete and submit your order form by March 10, 2015.
Make check payable to and send directly to:
Monroe County SWCD
145 Paul Rd., Bldg. #5, Rochester, NY 14624.***

**PLEASE REMEMBER – THE CONFIRMATION WE MAIL WILL BE
OUR ONLY CONTACT UNTIL YOU PICK UP YOUR ORDER.**

***Distribution of all pre-orders will be: April 23-24th, 2015
at the ecopark on 10 Avion Drive, Rochester, NY 14624 from
9:00 a.m.—5:30 p.m.***

For directions visit: <http://www.monroecounty.gov/ecopark>

TREE & SHRUB OVERSTOCK SALE

**April 25th, 2015 9:00am—12:00pm at the:
Monroe County ecopark
10 Avion Drive, Rochester, NY 14624.**

This is a rain or shine event!

To ensure you can receive the selections you want we recommend pre-ordering. For those that miss the pre-order deadline visit the Overstock Sale, noting that not all species may be available at that time. We sell to our customers on a first come, first served basis.



The District's Annual Conservation Tree and Shrub Program distribution site will be at the Monroe County ecopark facility. The ecopark provides county residents with an innovative facility that serves as a "one-stop drop-off" to dispose of and recycle their items. This facility is a partnership between Monroe County and Waste Management of New York.

**Regular Collection Hours:
Wednesdays 1:00 p.m.-6:30 p.m.
Saturdays 7:30 a.m.-1:00 p.m.**

Please note that there will not be collection hours available during our pre-order distribution (April 23-24th). No ecopark staff will be available at that time. We encourage you to visit during their new hours listed above or come by during our Overstock Sale scheduled for Saturday, April 25th.

Compost mulch will continue to be available at the ecopark during both the Tree and Shrub pre-order distribution and overstock sale. This is a great source for you to obtain excellent nutrients and cover for your plantings!

**For more information, visit the ecopark website at:
<http://www.monroecounty.gov/ecopark>**