

Ph: 585-753-7380

Fax: 585-753-7374



ORDER BEFORE MARCH 7, 2014

**MONROE COUNTY SOIL & WATER
CONSERVATION DISTRICT**
Monroe County Fleet Center
145 Paul Road, Building #5 Rochester, NY 14624
www.monroecountyswcd.org

CONSERVATION TREE AND SHRUB PROGRAM 2014 CATALOG

This is YOUR opportunity to improve the value of your property while developing wildlife habitat, minimizing erosion, and enjoying the beauty of the natural world!

What is a seedling?

A seedling is a bare root tree or shrub. Our program typically carries two or three year old seedlings (10-36") in height, depending on if it is a conifer or hardwood. They are shipped in bulk while dormant, with out a root ball or soil, but are covered in either a moist material or root dipped to retain moisture.



Pictured above: A sample of what a one or two year old seedling may look like.

INSIDE:

- **Detailed Information** on our individual tree & shrub species designed for You! (Pgs.3-6)
- **Groundcovers** (Pg. 7)
- **Conservation Multipacks** (Pg. 8-12)
- **Seed Packets** (Pg. 12)
- **Enhancement Items** (Pg. 13)
- **Seedling Handling & Planting Tips** (Pg.13)
- **Ordering Details** (Pg. 14)
- **Overstock Sale** (Pg. 14)
- **ecopark Info** (Pg. 15)

Do you need fertilizer?

A soil test can tell you what, if any, nutrients your soil needs. Call your local Cornell Cooperative Extension office for information. In Monroe County, contact Cooperative Extension @ 585-461-1000.

Did you know?

One known source of pollution is phosphorous from fertilizer that we use on our lawns. Phosphorus is a pollutant of concern in our local water bodies. We are pleased to continue offering **Milorganite**, a low Phosphorous fertilizer that may also help deter deer! (Phosphorous free fertilizer is now available in most stores).

*The 2014 Tree and Shrub Program Catalog is available electronically through the Conservation District's website at: www.monroecountyswcd.org
Please help conserve paper and only print out the catalog if absolutely necessary.*



Follow us on Facebook!

TABLE OF CONTENTS

PLEASE NOTE: Sizes of stock may vary from year to year. Be sure to check the sizes listed on the order form and in the catalog when making your selections.

New Species Highlights2

Conifers

Balsam Fir	3
Colorado Blue Spruce	3
Concolor Fir	3
Douglas Fir.....	3
Eastern White Pine	3
Norway Spruce.....	3
Red Pine	3
White Cedar	3
White Spruce.....	4

Deciduous Shrubs

American Cranberry	4
Blueberry.....	4
NEW Buttonbush	4
Red Raspberry	4
NEW Winterberry.....	5

Deciduous Trees

American Beech	5
American Sycamore	5
Black Cherry.....	5
Eastern Redbud	5
Red Maple	6
Red Oak.....	6
NEW River Birch	6
Sugar Maple	6
NEW Sweet Crabapple	6

Groundcovers

NEW Black-eyed Susan	7
Hosta.....	7
Myrtle.....	7
NEW New York Fern	7
NEW Wild Geranium	7

Conservation Plant Packs

Butterfly Tree & Shrub Pack (#1)	8
Evergreen/Christmas Tree Pack (#2)	8
Fern Plant Pack (#3)	9
Hummingbird & Bee Pack (#4)	9 NEW
Native Flowering Tree & Shrub Pack (#5) ...	10 Updated Mix
Perennial Plant Pack (#6)	10
Riparian Tree & Shrub Pack (#7).....	11
Songbird Tree & Shrub Pack (8)	11 Updated Mix
Wildflower Plant Pack (#9).....	12

Seed Packets

Bird & Butterfly Seed Mix	12
Erosion Control Seed Mix	12
Wildflower Seed Mix (full sun)	12
Wildflower Seed Mix (partial shade)	12

Enhancement Items

Bat Box	13
Bluebird Nest Box	13
Fertilizer Tablets (Slow Release)	13
Flags	13
Milorganite.....	13
Rain Barrel Kit	13
Root Gel.....	13
4 Foot Stakes (Hardwood)	13
Tree Shelters.....	13

Tree Distribution will be:

April 17th and 18th, 2014
From 9:00am until 5:30pm
at the Monroe County ecopark located at
10 Avion Drive, Rochester, NY 14624
<http://monroecounty.gov/ecopark>

Don't Miss Our Tree and Shrub Overstock Sale

April 19th, 2014 from 9:00am - 12:00pm
at the Monroe County ecopark.

This is a rain or shine event. Not all species may be available during the overstock sale. First come, first serve. To ensure that you receive the selections you want, we suggest costumers pre-order.

***Note:** Hard copies of the 2014 Tree and Shrub Program catalog are available upon request for a **FEE**.*

Questions? Call Monroe County SWCD @ (585) 753-7380

Buttonbush (*Cephalanthus occidentalis*) is a multi-stemmed native shrub that grows to a height of 12 feet. Flowers grow in dense, round, 1 inch diameter clusters which bloom from June to September. This shrub is best adapted to saturated soil conditions from shorelines to swamps in full sunlight. It can tolerate growing in water depths of up to three feet. Butterflies, bees and hummingbirds are attracted to the plant for its nectar and waterfowl and shoreline birds consume the seeds and use this species as cover.



Winterberry (*Ilex verticillata*) is a native shrub growing to a maximum height of 15 feet. Dense branches grow in a zig-zag pattern with an upright spreading crown. Small greenish to yellowish-white flowers bloom from April to June with scarlet red to orange fruit maturing by late summer. The red globular fruit remains attached to the plant through the winter months making it very popular for landscaping. In addition, fruit are eaten by many small mammals and at least 48 different species of birds. Note that the fruit is not edible by humans.

River Birch (*Betula nigra*) is a deciduous medium to large sized native tree, growing from 40 to 70 feet tall. The exfoliating gray-brown to ivory to copper colored bark makes this tree a very popular ornamental and landscaping tree. River Birch can tolerate poorly drained to well drained soils making it very versatile, however the species is not shade tolerant. Typically planted for erosion control along streams, this tree also provides habitat and food for many small mammals and birds.



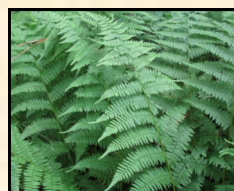
Sweet Crabapple (*Malus coronaria*) is a deciduous medium sized tree native to New York, growing to a maximum of 35 feet tall. This species is known for its very fragrant, white to white-pink flowers, blooming from May to June. One inch sized yellowish-green crabapples ripen in the fall. Contrary to the name the sweet crabapples are very bitter making them ideal for jams. This species is great for wildlife as a food resource for butterflies and bees during the bloom and mammals once the fruit ripens.



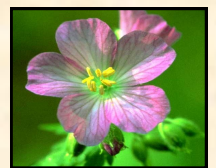
Black-eyed Susan (*Rudbeckia hirta*) is a native biennial flower growing to about 3 feet tall with yellow flowers with dark brown spherical centers. Flower stalks appear in early summer and bloom from June to September. This species can grow in a wide range of soils from well drained to somewhat poorly drained. Not only is this species planted for landscaping purposes, but Black-eyed Susans are an important critical area seedling used for erosion control purposes.



New York Fern (*Thelypteris noveboracensis*) is a deciduous fern with leaves about 18 inches long and about 6 inches wide. Growing in tufts from main root clump, the New York fern grows in moist woodlands in full to part shade.



Wild Geranium (*Geranium maculatum*) is a herbaceous perennial growing to about 2 feet tall and blooming from April to May. This species can tolerate full sun to part shade. The pale pink to deep pink flowers attract butterflies and makes for a great ornamental flower.



Balsam Fir*(Abies balsamea)* **Native**

Slow growth rate, up to 60 feet. Prefers silt loams, but will grow in most soils and is shade tolerant. Primarily used for Christmas trees, lumber, and wildlife habitat. Flat needles that are strongly curved. 12-20" seedlings. Price: \$16/10 pack; \$69/50 pack; \$100/100 pack



Photo credit: Wikipedia Commons



Photo credit: www.woodmagic.vt.edu

Eastern White Pine*(Pinus strobus)* **Native**

Rapid growth rate, up to 150 feet. Prefers moist to well-drained soils with partial to full sun, but is adaptable to adverse soil conditions. Primarily used for lumber and Christmas trees. Long, slender, soft, blue-green needles in clusters of five. 10-15" seedlings. Price: \$11/10 pack; \$45/50 pack; \$76/100 pack

Colorado Blue Spruce*(Picea pungens)* **Native**

Slow growth rate, up to 100 feet. Prefers moist, acidic, well-drained soils with partial to full sun. Primarily used for screens, windbreaks, and Christmas trees. Sharp needles with a bluish tint. 15-18" seedlings. Price: \$11/10 pack; \$42/50 pack; \$76/100 pack



Photo credit: Wikipedia Commons

**Norway Spruce***(Picea abies)* **Non-Native**

Slow to moderate growth rate, up to 130 feet. Prefers moist, acidic, well-drained soils with partial to full sun. Does not tolerate poorly drained soils. Primarily used for windbreaks, ornamental plantings, and sometimes Christmas trees. Dark green needles. 10-15" seedlings. Price: \$11/10 pack; \$45/50 pack; \$76/100 pack

Concolor Fir*(Abies concolor)* **Native**

Slow to moderate growth rate, up to 120 feet. Prefers deep, permeable soils with partial to full sun. Primarily used for Christmas trees and lumber. Curved silver/green needles. 12-20" seedlings. Price: \$16/10 pack; \$63/50 pack; \$96/100 pack



Photo credit: www.tdja.hu



Photo credit: Wikipedia Commons

Red Pine*(Pinus resinosa)* **Native**

Rapid growth rate, up to 80 feet. Prefers well-drained, dry, highly acid, sandy soils with full sun. Primarily used for lumber, but also Christmas trees, wildlife habitat, and windbreaks. Soft long and slender needles in clusters of two. 15 - 18" seedlings. Price: \$11/10 pack; \$45/50 pack; \$76/100 pack

Douglas Fir*(Pseudotsuga menziesii)* **Native**

Slow to moderate growth rate, up to 200 feet. Prefers moist, well-drained, slightly acidic, rich, cool soils with partial to full sun. Does not tolerate dry or poorly drained soils. Primarily used for lumber, but also used for Christmas trees, windbreaks, and screens. Thin, flattened needles with white stomata underneath. 15-18" seedlings. Price: \$11/10 pack; \$45/50 pack; \$76/100 pack

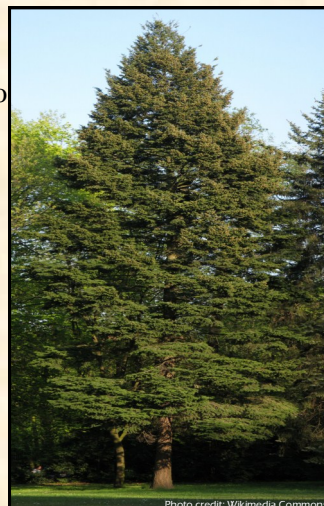


Photo credit: Wikimedia Commons



Photo: USFW

White Cedar*(Thuja occidentalis)* **Native**

Slow growth rate, up to 50 feet. Prefers moist, well-drained, loamy soils in full sun, but very adaptable to adverse conditions, such as heat, drought, humidity, and pollution. Primarily used for lumber, screens and wildlife habitat. Flattened needles that are aromatic. This species is also known as the American arborvitae. 12-20" seedlings. Price: \$15/10 pack; \$62/50 pack; \$95/100 pack

CONIFERS

White Spruce

(Picea glauca) **Native**

Slow to moderate growth rate, up to 100 feet. Prefers moist, well-drained soils and is shade tolerant. Not tolerant to pollution, winter salt spray, dry soils, and heat. Primarily used for lumber, windbreaks, Christmas trees, screens and wildlife habitat. Green needles, with pungent odor when crushed

12-18" seedlings

Price: \$12/10 pack; \$47/50 pack; \$78/100 pack



DECIDUOUS SHRUBS

American Cranberry

(Viburnum trilobum) **Native**

Slow growth rate, up to 10 feet. Can tolerate a wide variety of soil conditions, from well-drained to poorly drained. Prefers partial to full sun. Provides habitat & food resource for wildlife. Produces creamy-white flowers in May-June, and bright red/orange fruit which ripens in September-October.

18-24" seedlings.

Price: \$14/10 pack; \$55/50 pack



Buttonbush (NEW!)

(Cephalanthus occidentalis)

Native

Moderate growth rate, up to 12 feet. Prefers poorly to somewhat poorly drained soils and can tolerate shady conditions. Flowers grow in dense, round, 1 inch diameter clusters which bloom from June to September. Butterflies, bees and hummingbirds are attracted to the plant for its nectar and waterfowl and shoreline birds consume the seeds and use this species as cover.

18-24" seedling

Price: \$14/10 pack; \$56/50 pack

Blueberry

(Vaccinium corymbosum) **Native**

Moderate growth rate, up to 12 feet. Prefers a wide variety of soil conditions with saturation. This is a shade tolerant species. Primarily used for fruit production, ornamental, and wildlife. White-pinkish flowers bloom from February to June and 1/2" blue berries fruiting from April to October. Leaves turn red in fall.

9-12" rooted plant

Price: \$46/10 pack; \$170/50 pack



Red Raspberry

(Rubus latham) **Native**

Rapid growth rate, up to 4 feet. Prefers moist, well-drained soils with full sun. Primarily used as a food resource for humans and wildlife. White flowers bloom from May to July, forming juicy red berries in July.

9-12" rooted plant

Price: \$35/10 pack; \$130/50 pack

Winterberry (NEW!)*(Ilex verticillata)* **Native**

Slow growth rate, up to 15 feet. Prefers moist soils and is shade tolerant. Red to orange fruit maturing by late summer and remains attached to the plant through the winter months. The fruit are eaten by many small mammals and at least 48 different species of birds.

12-18" seedlings.

Price: \$16/10 pack; \$66/50 pack



DECIDUOUS TREES

American Beech*(Fagus grandifolia)* **Native**

Moderate growth rate, growing up to 50-80 feet. Prefers moist, deep, rich, well drained soils and is adapted to growing in part shade to full shade. Beech nuts are among the most important of wildlife foods. Dark green, glossy leaves turn copper-colored in the fall. Beech bark is very smooth and light gray, remaining so even as the tree ages.

12-18" seedlings.

Price: \$16/10 pack; \$65/50 pack



Photo credit: Wildflower.org

**Black Cherry***(Prunus serotina)* **Native**

Rapid growth rate, up to 80 feet. Prefers moist, rich, moderately-well drained soils, but will tolerate a variety of soil types, textures, and drainages with partial or full sun. Primarily used for lumber and for habitat & food resource for wildlife. Flowers are small and white, becoming 3/8" black cherries. Crushed foliage and bark have a cherry-like odor and a bitter taste.

18-24" seedlings.

Price: \$13/10 pack; \$55/50 pack

American Sycamore*(Platanus occidentalis)* **Native**

Rapid growth rate, up to 100 feet. Prefers moist, deep, rich soils with full sun, but is very adaptable to a dry, wet, compacted, and poor soil conditions. Primarily used for pulpwood and wildlife habitat. Has a large, broad, open crown, with crooked branches. Bark is attractively mottled.

18-24" seedlings.

Price: \$13/10 pack; \$55/50 pack



Photo credit: www.csd.tamu.edu

**Eastern Redbud***(Cercis canadensis)* **Native**

Slow growth rate, growing up to 15 to 30 feet tall. Very drought resistant. One of the first trees to bloom in spring, Eastern Redbud produces a vibrant display of pink flower clusters that cover the entire tree.

18-24" seedlings.

Price: \$14/10 pack; \$57/50 pack

Red Maple*(Acer rubrum)* **Native**

Moderate to rapid growth rate, up to 80 feet. This species grows on the widest variety of soil types, textures, and drainages of any North American species with partial sun to full sun (partial shade tolerant in youth). Primarily used for lumber and habitat & food resource for wildlife. Leaves are deciduous, opposite, long-petioled, with a bright red fall color.

18-24" seedlings.
Price: \$14/10 pack; \$55/50 pack



Photo credit: www.mass.gov

**River birch (NEW!)***(Betula nigra)* **Native**

Rapid growth rate, up to 40 to 70 feet tall. Tolerates poorly to well drained soils but prefers partially drained soils with full to part sun. The exfoliating gray-brown to ivory to copper colored bark makes this tree a very popular ornamental and landscaping tree. Planted for erosion control along streams, this tree also provides habitat and food for mammals and birds.

18-24" seedlings.

Price: \$13/10 pack; \$55/50 pack

Red Oak*(Quercus rubra)* **Native**

Moderate growth rate, up to 80 feet. Prefers deep, fertile, well-drained, finely textured soils, but very adaptable to many different soil types, textures, and drainages with partial sun to full sun (partial shade tolerant in youth). Primarily used for lumber and habitat & food resource for wildlife. One inch in diameter, bitter acorns are heavily predated upon by mammals.

18-24" seedlings.

Price: \$14/10 pack; \$55/50 pack



Photo credit: www.hort.uconn.edu



Photo credit: Wikimedia Commons

Sugar Maple*(Acer saccharum)* **Native**

Slow growth rate, up to 150 feet. Prefers rich, mesic, well-drained soils and is shade tolerant. Will tolerate drier upland woodland soils. Primarily used for commercial sap production and habitat & food resource for wildlife. Leaves are deciduous, opposite, and are long-petioled. Fruits are winged nutlets, in a pair, 2-2.5 cm long. It is the New York State Tree. Provides a beautiful display of fall color.

18-24" seedlings.

Price: \$14/10 pack; \$55/50 pack

**Sweet Crabapple (NEW!)***(Malus coronaria)* **Native**

Moderate growth rate, up to 30 feet. Prefers poorly drained to moderately drained soils, and is tolerant of partial shade. Known for very fragrant, white to white-pink flowers, blooming from May to June. One inch sized yellowish-green crabapples ripen in the fall and wildlife use as a food resource for butterflies and bees during the bloom and mammals once the fruit ripens.

12-18" seedlings.

Price: \$15/10 pack; \$63/50 pack

We're Listening.....

In an effort to continually meet the needs and requests of our customers we have made a few more changes to our 2014 program. **Take Note:**

•This year we have updated our plant stock, introducing new species that are beautiful and beneficial. Twenty-eight individual tree, shrub, and groundcover species are offered this year, with forty species offered in our plant variety packs.

•Prices have dropped where-ever possible (notably, units of 50) to provide cost savings for our customers; if you are interested in getting a quote for 500 or more please contact our office @ (585) 753-7830.

•New species such as Buttonbush, Winterberry, River Birch, Sweet Crabapple, Black-eyed Susan and Wild Geranium; as well as new multi packs like the Hummingbird and Bee Multi Pack and updated packs such as the Native Flowering Tree and Shrub and Songbird Tree and Shrub Multi Packs.

Black-eyed Susan (NEW!)*(Rudbeckia hirta)* **Native**

Perennial with a rapid growth rate, up to 3 feet. Prefers well drained to somewhat poorly drained soils in full sun. Yellow flowers with dark brown spherical centers bloom from June to September.

Not only is this species planted for landscaping purposes, but Black-eyed Susans are an important critical area seedling used for erosion control purposes. Dormant rooted clumps.

Price: \$14/10 pack; \$54/50 pack

**Myrtle or Common Periwinkle***(Vinca minor)* **Non-native**

Moderate growth rate, up to 1/2 a foot. Prefers well drained to poorly drained soils that are medium textured to fine textured with ample moisture with partial shade. Will tolerate full sun. Primarily used for erosion control. This perennial evergreen ground cover is winter hardy and produces small blue flowers indeterminately from April to September.

Rooted clumps.

Price: \$34/50 pack; \$61/100 pack

**Hosta***(Fortunei hyacinthina)* **Non-native**

Rapid growth rate, up to 2 feet. Prefers moist, well drained soils that are slightly acidic with partial to full shade. This species blooms in mid to late summer. Flowers are pale lavender to purple.

Rooted clumps.

Price: \$15/10 pack; \$50/50 pack

**New York Fern***(Thelypteris noveboracensis)* **Native**

Moderate growth rate, up to 1.5 feet in height. Prefers well drained to imperfectly moderately drained soils in partial to full shade. This fern is straw-colored, shading to green, scales tan to reddish brown.

Rooted clumps

**Wild Geranium (NEW!)***(Geranium maculatum)*

Perennial with a moderate growth rate, up 2 feet. Prefers moderately well drained to somewhat poorly drained with full sun to part shade. Herbaceous wildflower blooms from April to May. The pale pink to deep pink flowers attract butterflies and makes for a great ornamental flower. Rooted clumps

Price: \$14/10 pack; \$54/50 pack

Butterfly Tree and Shrub Pack #1— Plant pack contains 10 plants with two of each species with dormant plants & seedlings 12-24". **Price: \$18.00 per packet**

Butterflybush

(Buddleja davidii) **Non-Native (12-24")**

Rapid growth rate, up to 12 feet. Prefers well-drained, dry soils with full sun. Will not tolerate saturated soils. Primarily used as a habitat & food resource for wildlife. Fragrant purple, white, pink, or red flowers attract butterflies. Dies back somewhat over the winter. Please Note: stock is in a dormant state when distributed to customers. Once planted it may take up to 12 weeks for new growth to occur, depending on sun exposure. Most stock blooms in its first season!

American Beauty Berry

(Callicarpa americana) **Native (12-18")**

Rapid growth rate, up to 6 feet tall. Prefers moist soils, but is adapted to moist, loamy, upland, sandy or shallow sites. Intolerant of deep shade. An important food source for wildlife including deer, squirrel, fox, and over 40 species of song birds. Blue, violet, pink, and white flowers form in spring and early summer, with small blue to purple berries forming in August or September.

Dense Blazing Star

(Liatris spicata) **Native (dormant plant)**

Slow growth rate, up to 4 feet. Often found in moist, open fields and sedge meadows, it thrives in full sun and moist soils, and can tolerate partial shade. Linear, grass-like leaves extend up the stem to showy purple flower clusters. Flowers bloom from July-September. An excellent garden plant that attracts both birds and butterflies.

Ninebark

(Physocarpus opulifolius) **Native (18-24")**

Slow growth rate, up to 10 feet. Prefers moist, acidic, sandy soils, but will tolerate gravel bars, and rocky slopes and bluffs along streams with full sun. Primarily used as a habitat & food resource for wildlife. Flowers are an excellent nectar source, and fruits are eaten by many species of birds. Ninebark is an endangered species. Fruit is shiny, red at maturity, glabrous or hairy, in clusters of 3-5 per flower. This species flowers in May-July and fruits in May-July.

Lilac

(Syringa vulgaris) **Non-Native (18-24")**

Moderate growth rate, up to 20 feet. Prefers neutral to slightly acidic soils with full sun. This species does not tolerate poorly drained soils. Provides habitat and food resources for wildlife, and the flowers are used in making dyes. The flowers are mostly white, lilac, or purple and pleasantly fragrant.

Evergreen/Christmas Tree Pack #2— Plant packs contain 10 plants with two of each species. Seedlings are 9-15" **Price: \$18.00 per packet**

Colorado Blue Spruce

(Picea pungens) **Native (12-15")**

Slow growth rate, up to 100 feet. Prefers moist, acidic, well-drained soils with partial to full sun. Primarily used for screens, windbreaks, and Christmas trees. Sharp needles with a bluish tint.

Douglas Fir

(Pseudotsuga menziesii) **Native (12-15")**

Slow to moderate growth rate, up to 200 feet. Prefers moist, well-drained, slightly acidic, rich, cool soils with partial to full sun. Does not tolerate dry soils and poorly drained soils. Primarily used for lumber, but also used for Christmas trees, windbreaks, and screens. Thin, flattened needles with white stomata underneath.

White Spruce

(Picea glauca) **Native (12-15")**

Slow to moderate growth, up to 100 feet. Prefers moist to well-drained soils and is shade tolerant. Not tolerant to pollution, winter salt spray, dry soils, and heat. Primarily used for lumber, windbreaks, Christmas trees, screens and wildlife habitat. Green needles, with pungent odor when crushed.

Eastern White Pine

(Pinus strobus) **Native (12-15")**

Rapid growth, up to 150 feet. Prefers moist to well-drained soils with partial to full sun, but very adaptable to adverse soil conditions. Primarily used for lumber and Christmas trees. Long, slender, soft, blue-green needles in clusters of 5.

Fraser Fir

(Abies fraseri) **Native (9-12")**

Moderate growth rate, up to 55 feet. Prefers moist, well-drained soils and is shade tolerant. Primarily used for Christmas trees due to its ability to hold its soft needles for a long time after being cut. Shiny dark green needles, bark has many resin blisters.

Fern Plant Variety Pack #3— Plant packs contain 10 plants with two of each species. All of these ferns are protected plants in New York. Plants are in dormant, rooted clumps. **Price: \$18.00 per packet**

Cinnamon Fern

(Osmunda cinnamomea) **Native**

Moderate growth rate, up to 5 feet in height. Prefers poorly drained, wet acid soils and in partial to full shade. This perennial fern gets its name because of the cinnamon-colored hairs covering leaf stalks and reproductive bodies.

Christmas Fern

(Polystichum acrostichoides) **Native**

Moderate growth rate, up to 2 feet in height and 2 feet in width. Prefers moist, well-drained and acidic soils in partial to full shade. This perennial fern is evergreen, dark green, lanceolate, once-pinnate, with a characteristic "ear-like" lobe pointing upwards. Most commonly found in woodlands.

Ostrich Fern

(Athyrium pycnocarpon) **Native**

Moderate growth rate, up to 3 feet in height. Prefers moist soils with partial to full shade. This fern has a smooth lance shaped pinnae and has sharp pointed tips that are reduced at the base.

Maidenhair Fern

(Adiantum pedatum) **Native**

Moderate growth rate, up to 2.5 feet in height and 1.5 feet in width. Prefers moist, acidic soils, but will tolerate medium well-drained soils in partial shade to full shade. This perennial fern is finely-textured, with somewhat frilly fronds which have curved stalks and are palmately-divided.

New York Fern

(Thelypteris noveboracensis) **Native**

Moderate growth rate, up to 1.5 feet in height. Prefers well-drained to imperfectly-drained soils in partial to full shade. This fern is straw-colored, shading to green, scales tan to reddish brown.

Hummingbird & Honeybee Plant Pack #4— Plant packs contain 10 plants with two of each species with dormant plants and seedlings are 12-18". **Price: \$18.00 per packet**

NEW PACK

American Beauty Berry

(Callicarpa americana) **Native (12-18")**

Rapid growth rate, up to 6 feet tall. Prefers moist soils, but is adapted to moist, loamy, upland, sandy or shallow sites. Intolerant of deep shade. An important food source for wildlife including deer, squirrel, fox, and over 40 species of song birds. Blue, violet, pink, and white flowers form in spring and early summer, with small blue to purple berries forming in August or September.

Larkspur

(Delphinium) **Native (dormant plant)**

Moderate growth rate, up to 4 feet. Prefers moderately well drained to somewhat poorly drained soils and with full to partial sun conditions. Pale and dark blue, purple, pink, or white flowers bloom in spring and early summer depending on the variety. This annual self seeds in most gardens, coming back year after year.

Wild Red Columbine

(Aquilegia) **Native (dormant plant)**

Rapid growth rate, up to 3 feet. Prefers well drained to moderately well drained soils, in full sun to partial shade conditions. Yellow, red, pink, purple or blue, single or multi colored flowers bloom in early spring to summer.

Red Root

(Ceanothus americanus L.) **Native (12-18")**

Slow growth rate, up to 3 feet. Prefers well drained to moderately well drained soils and is shade tolerant. This low growing deciduous shrub, produces tiny white flowers in oval clusters. Wildlife including large and small mammals and birds eat the fruit. Bees, wasps, butterflies are attracted to the flowers. Also known as New Jersey Tea, the leaves of this shrub are often used to make tea.

Jacob's Ladder

(Polemonium) **Native (dormant plant)**

Moderate growth rate, up to 3 feet. Prefers moderately well drained to somewhat poorly drained soils in full to part sun. White, blue, pink, yellow flowers bloom in spring through early summer.

Native Flowering Tree and Shrub Pack #5—Plant packs contain 10 plants with two of each species. Seedlings are 12-24". **Price: \$18.00 per packet**

UPDATED PACK

Juneberry

(Amelanchier arborea) **Native (18-24")**

Slow growth rate, up to 36 feet. Also known as Serviceberry, it grows well in partial shade to full sun, and prefers moist, but well-drained soils. Will also grow on dry sites. Among the first of the early spring trees and shrubs to bloom, Juneberry flowers in March-May, and fruiting June-August. At least 40 different song bird species are known to feed on the fruit of this species.

Spicebush

(Lindera benzoin) **Native (12-18")**

Slow growth rate, up to 12 feet. Prefers moist, moderately to poorly drained soils with partial shade to full sun. Primarily used for habitat & food resource for wildlife. Twigs and leaves are spicy-fragrant when crushed. Produces scarlet fruits (1/3" long) in early autumn.

American Cranberry

(Viburnum trilobum) **Native (18-24")**

Slow growth rate, up to 10 feet. Prefers moist, well-drained soils, but is adaptable to a variety of soil conditions. Not shade tolerant. Primarily used for medicinal purposes by Native Americans, and as a habitat & food resource for wildlife. Fruit is berry-like, bright red, 8-10mm in diameter is collected in late August to early September, when slightly under-ripe (and sour), and used in sauces, jellies, and juices.

Tulip Tree

(Liriodendron tulipifera) **Native (18-24")**

Rapid growth rate, up to 120 feet. Grows best in moderately moist, deep, well drained, loose textured soils. Does not do well in overly dry or overly saturated soils, or in shade. This species has many benefits including: rapid growth rate, resistance to insect/disease damage, attractive flowers, visually pleasing autumn colors, and it provides food for wildlife. A member of the magnolia family, the tulip tree produces light greenish-yellow flowers from April-June.

White Flowering Dogwood

(Cornus florida) **Native (18-24")**

Moderate growth rate, up to 30 feet. Prefers rich, well-drained, acidic soils and is shade tolerant. Primarily used for habitat & food resource for wildlife. White flowers bloom in the spring and bright red berries ripen in fall and winter. This native is also a protected species.

Perennial Plant Pack #6—Plant packs contain 10 plants with two of each species.

Plants are dormant rooted clumps. **Price: \$18.00 per packet**

Blue King Iris

(Iridaceae Iris sibirica) **Non-native**

Growth rate unknown, up to 2.5 feet. Prefers moist, well-drained soils with full sun to partial shade. This species blooms in late spring to early summer with flowers turning violet blue, with gold and white markings on the falls and bold veining. This species is less likely to be eaten by deer.

Snow Queen Iris

(Iridaceae Iris sibirica) **Non-native**

Moderate to rapid growth rate, up to 3 feet in height. Prefers moist, well-drained soils with full sun to partial shade. This species has medium flowers that are snow white and are less likely to be eaten by deer.

Autumn Joy Sedum

(Sedum spectabile) **Non-native**

Growth rate unknown, up to 2 feet in height and 1 foot width. Prefers moist, well-drained soils, with full sun or light shade. It is extremely tolerant to heat and drought. Flowers bloom in late summer or autumn, producing deep pink flowers at first, and then turning pinkish bronze to eventually copper-red to reddish to bronze flowers.

Beebalm

(Monarda fistulosa) **Native**

Moderate growth rate, and grows up to 2-5 feet in height. This species thrives in a wide range of soils, and prefers full sun to partial shade. Clusters of attractive lavender, pink, or white flowers bloom in May-September, and provide valuable resources to bees and other pollinators.

Foamflower

(Tiarella cordifolia) **Native**

Slower growth rate, this perennial flower grows up to 1-3 feet. Prefers moist, well-drained soils, and shade. Attractive, white flowers bloom in April-July.

Riparian Tree & Shrub Pack #7—Plant packs contain 10 plants with two of each species. Seedlings are 18-24". **Price: \$18.00 per packet**

Red Osier Dogwood

(*Cornus sericea*) **Native (18-24")**

Moderate growth rate, but quick to establish, commonly grows from 3-10 feet. Is adapted to growing well in moist soils (especially along streams), and can grow in shade, partial shade, and full sun. White flowers bloom in March-May, and red branches retain their color throughout the year. An excellent specie for soil/bank stabilization and erosion control.

Buttonbush

(*Cephalanthus occidentalis*) **Native (18-24")**

Moderate growth rate, and grows up to 6-12 feet. It is well suited to areas with wetter soils or poor drainage, and also grows well in the shade. An attractive ornamental plant, the white/pink Buttonbush flowers bloom from June-September and resemble round pincushions. Seeds are consumed by water fowl and Buttonbush also serves as a honey plant for pollinators.

Ninebark

(*Physocarpus opulifolius*) **Native (18-24")**

Slow growth rate, up to 10 feet. Prefers moist, acidic, sandy soils, but will tolerate gravel bars, and rocky slopes and bluffs along streams with full sun. Primarily used as a habitat & food resource for wildlife. Flowers are an excellent nectar source, and fruits are eaten by many species of birds. Ninebark is an endangered species. Fruit is shiny, red at maturity, glabrous or hairy, in clusters of 3-5 per flower. This species flowers in May-July and fruits in May-July.

Streamco Willow

(*Salix purpurea*) **Non-native (18-24")**

Rapid growth rate and resilient stems grow up to 16 feet in height. Suited for a variety of soil types, and grows in imperfectly-drained to well-drained soils and is shade tolerant. Often used in bioengineering and to control erosion along streams.

River Birch

(*Betula nigra*) **Native (18-24")**

Rapid growth rate, up to 40 to 70 feet tall. Prefers poorly drained to well drained soils and with partial sun to full sun. The exfoliating gray-brown to ivory to copper colored bark makes this tree a very popular ornamental and landscaping tree. Planted for erosion control along streams, this tree also provides habitat and food for mammals and birds.

Songbird Tree & Shrub Pack #8—Plant packs contain 10 plants with two of each species.

Seedlings are 18-24". **Price: \$18.00 per packet**

UPDATED PACK

American Cranberry

(*Viburnum trilobum*) **Native (18-24")**

Slow growth rate, up to 10 feet. Prefers moist, well-drained soils, but is adaptable to a variety of soil conditions. Not shade tolerant. Primarily used for medicinal purposes by Native Americans, and as a habitat & food resource for wildlife. Fruit is berry-like, bright red, 8-10mm in diameter is collected in late August to early September, when slightly under-ripe (and sour), and used in sauces, jellies, and juices.

Sargent Crabapple

(*Malus sargentii*) **Native (18-24")**

Moderate growth rate, up to 10 feet. Prefers well drained soils, but will grow in a variety of soils including somewhat poorly drained soils. Not shade tolerant. Primarily used for screens, wildlife and ornamental purposes. Densely branched shrub, with white flowers and red fruit.

Elderberry

(*Sambucus canadensis*) **Native (18-24")**

Rapid growth rate, up to 7 feet. Prefers well-drained, slightly acidic soils bordering streams with partial to full sunlight. Primarily used for erosion control and for habitat & food resource for wildlife. At least 50 species of songbirds, upland game birds, and small mammals eat the fruit in the summer and early fall. Fruits ripen from late July into September. They are round, slightly bitter, edible purple-black berries with crimson juice. Caution: New growth when consumed by livestock is toxic and can be fatal.

Tulip Tree

(*Liriodendron tulipifera*) **Native (18-24")**

Rapid growth rate, up to 120 feet. Grows best in moderately moist, deep, well drained, loose textured soils. Does not do well in overly dry or overly saturated soils, or in shade. This species has many benefits including rapid growth rate, resistance to insect/disease damage, attractive flowers, visually pleasing autumn colors, and it provides food for wildlife. A member of the magnolia family, the tulip tree produces light greenish-yellow flowers from April-June.

Juneberry

(*Amelanchier arborea*) **Native (18-24")**

Slow growth rate, up to 36 feet. Also known as Serviceberry, it grows well in partial shade to full sun, and prefers moist, but well-drained soils. Will also grow on dry sites. Among the first of the early spring trees and shrubs to bloom, Juneberry flowers in March-May, and fruiting June-August. At least 40 different song bird species are known to feed on the fruit of this species.

Wildflower Plant Pack #9—Plant packs contain 10 plants with two of each species.

Plants are dormant rooted clumps. Price: \$18.00 per packet

Wild Geranium

(*Geranium maculatum*) Native

Moderate growth rate, and grows 1-3 feet. Growing well under a variety of conditions, wild geranium prefers partly shady to shady areas. A showy species; white, pink or purple flowers bloom from March-July. Seeds provide food resources for both birds and mammals.

Red Trillium

(*Trillium erectum*) Native

Slow growth rate, up to 1.5 feet. Prefers rich, moist, well-drained soils with partial to full shade. This perennial flower produces variable colored flowers ranging from red, white, maroon, pink, yellow, and purplish red. Flowering in spring this species has broadly oval to almost diamond shaped leaves.

Jack in the Pulpit

(*Arisaema triphyllum*) Native

Fast growth rate, and grows up to 1-3 feet tall. Easy to cultivate and requiring very little care, this specie thrives under a variety of conditions. Its has a distinctive, cylindrical, hooded flower that blooms green with purple/brown stripes from May-June.

Cardinal Flower

(*Lobelia cardinalis*) Native

A moderate growth rate, and grows up to 1-6 feet tall. Growing well in full sun, part shade, shade, it prefers moist/wet soils at all times. Brilliant red flowers bloom from May-October. Over-picking has led to scarcity of this plant in some areas, and its long, tubular flowers are often difficult for insects to navigate. Cardinal Flowers therefore depends on hummingbirds for pollination, and as such provide a mutually beneficial source of food for the tiny, pollinating hummingbird.

Bluebells

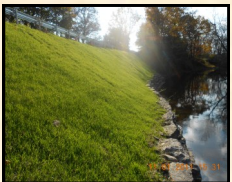
(*Mertensia virginica*) Native

Moderate growth rate, up to 2 feet. Prefers rich, moist soils near streams with partial to full shade. Commonly found in wooded flood plains. Flowering in early spring this species will produce bluish pink flowers and is considered one of the most beautiful native flowers.

SEED PACKETS



Bird & Butterfly Mix: This mix is a great choice for those looking to diversify habitat for birds and butterflies, while beautifying areas. A good companion to the variety packets on page 10. Needs full sun and covers 1300 sq. ft. (Species Included; *Annual Mallow*, *Bachelor's Button*, *Cosmos*, *Foxglove*, *Globe Gilia*, *Indian Blanket*, *Lance-Leaved Coreopsis*, *Ox-Eyed Daisy*, *Phlox*, *Purple Coneflower*, *Sweet William Catchfly*, *Tall Sweet Alyssum*, and *Yarrow*). **\$14.00 per 4oz. packet. Seeding rate: 7oz./1000 sq. ft. (roughly 9.5lbs/acre).** *Cosmos (pictured left).



Erosion Control Seed Mix: This is a specialty mix of plants and grasses for erosive sites and steep slopes or banks. Now twice as much! Approx. 14 oz. - covers 1000 sq. ft. (Species included: *Creeping Red Fescue*, *Common White Clover*, *Perennial Ryegrass*). **\$11.00 per packet. Seeding Rate: 14oz/1000 sq. ft.**



Wildflower Seed Mix (Full Sun): The perfect colorful seed mix for sunny spots. This mix includes annuals and perennials and covers 300 sq. ft. per oz. A variety of flowers bloom throughout the season. (Species Included: *Annual Mallow*, *Arroyo Lupine*, *Baby Blue Eyes*, *Baby Snapdragon*, *Black-Eyed Susan*, *Blanketflower*, *Blue Flax*, *Catchfly*, *Clarkia*, *Dame's Rocket*, *Evening Primrose*, *Farewell-to-Spring*, *Foxglove*, *Globe Gilia*, *Lance-Leaved Coreopsis*, *Phlox*, *Plains Coreopsis*, *Prairie Aster*, *Purple Coneflower*, *Scarlet Flax*, *Siberian Wallflower*, *Upright Prairie Coneflower*, *Yarrow*). **\$11 per 4oz. packet. Seeding rate: 2 oz./1000 sq. ft.**



Wildflower Seed Mix (Part Shade): This is a great mix to add color to partly shaded areas of your landscape. Includes annuals and perennials and covers 300 sq. ft. per oz. A variety of flowers bloom throughout the season. (Species Include: *Sweet Alyssum*, *Dwarf Columbine*, *Clarkia*, *Cynoglossum*, *Coreopsis*, *Rocket Larkspur*, *Sweet William Pinks*, *Foxglove*, *Purple Coneflower*, *Baby's Breath*, *Dames Rocket*, *Candytuft*, *Baby Blue Eyes*, *Corn Poppy*, *Black-Eyed Susan*). **\$11 per 4oz. packet. Seeding Rate: 2oz./1000 sq. ft.**

***Note: All above seed mix packets include sales tax in prices listed.**

OTHER ENHANCEMENT ITEMS

Bat Box Roosting Housing	Provide a home for a small brown bat or other species of bats. Little brown bats are insectivores, eating moths, wasps, beetles, gnats, mosquitoes, midges and mayflies, among others. Since many of their preferred meals are insects with an aquatic life stage, such as mosquitoes, they prefer to roost near water.	\$15.00 each
Bluebird Nest Box	Provide a home for our State Bird! Order with your spring plants or stop in anytime. Ask for mounting guidelines when you pick up your nest box.	\$15.00 each
Fertilizer: Slow Release Tablets	Slow release fertilizer tablets last for approximately 2 years. Typically one tablet is used per tree/shrub planted.	\$1.00/10 tablets
Flags	Use these brightly colored, 3 ft. wire flags to mark your planting site. Marked planting sites are less likely to be mowed over! Each bundle includes 100 flags.	\$14.00/bundle
Fertilizer: Milorganite	100% organic fertilizer for trees and shrubs. EPA approved (N-P-K) 6-2-0 plus micronutrients. Benefits local water quality with low Phosphorous. You may even find that the odor deters deer!	\$15.00/ 36 lb. bag
Rain Barrel Kit	Help conserve water by adding a rain barrel to your gutter system. Rain barrel holds 55 gallons of water that can be used to water your lawn or wash the car. Rainbarrels contained in these kits are recycled. Assembly of the rainbarrel is required by connecting a spigot to the bottom and creating an orifice to receive water from downspouts on the top.	\$45.00 each
Root Gel	A fine powder product that, when mixed with water, forms a gel consistency ideal for bare root dipping. Helps to decrease seedling stress in drought conditions. Each packet treats approximately 500 seedlings.	\$4.00 for 3oz. pkt.
4 Foot Stakes	Use these 4 ft. hardwood stakes to mark your planting site. Marked planting sites are less likely to be mowed over!	\$15 (10 pk.)
Tree Shelters	Includes a 4 ft. bio-degradable tube, stake and bird net. These help to protect hardwood trees from wildlife damage while speeding up growth rate.	\$8 each \$70 (10 pk.) \$325 (50 pk.)

*Note: All above items include sales tax in prices listed.

SEEDLING CARE & PLANTING TIPS - IMPORTANT!

Be sure to temporarily store your seedlings in a dark, cool area and to get them in the ground as soon as possible to reduce mortality. Once in storage, check the moisture content of each bundle and sprinkle with water if necessary. **DO NOT SOAK THEM IN WATER MORE THAN 30 MINUTES.** Plant seedlings in a properly prepared site location after sod has been removed. Consider sun/shade preferences for each plant as well as soils and drainage and pH. Plant seedlings at the proper depth and cover with mulch or other weed deterrent and water often. Following these tips can greatly increase plant survival rates.

**IMPORTANT ORDERING INFORMATION,
PLEASE READ**

Page 14

All seedlings are bare root. Stock may be used for wildlife habitat, erosion control, reforestation, windbreaks, landscaping, Christmas trees, etc. All trees and shrubs sold are to be used for the above conservation practices. All trees and shrubs are sold with the understanding that they will not be removed from the planted site with roots attached for resale. Orders are filled on a first-come, first-serve basis, while supplies last. The District reserves the right to refund payment on species and items if they should become unavailable. Because the District cannot check a planting location, nor guard against improper handling and planting procedures or weather related problems, the District will not be responsible for replacement or refunds of orders after distribution. Returned checks WILL NOT be reprocessed. Bounced checks will incur a \$20 fee. In such situations, the only forms of payment accepted will be money order or cash.

Complete and submit your order form by March 7, 2014.

Make check payable to and send directly to:

MCSWCD

145 Paul Rd., Bldg. #5

Rochester, NY 14624.

PLEASE REMEMBER – THE CONFIRMATION WE MAIL WILL BE OUR ONLY CONTACT UNTIL YOU PICK UP YOUR ORDER DURING DISTRIBUTION on April 17-18th, 2014 at the ecopark on 10 Avion Drive, Rochester, NY 14624.

For directions visit: <http://www.monroecounty.gov/ecopark>

TREE AND SHRUB OVERSTOCK SALE

April 19th, 2013 9:00am—12:00pm at the:

Monroe County ecopark

10 Avion Drive, Rochester, NY 14624.

This is a rain or shine event.

We encourage pre-ordering to ensure customer species preference is available.

Not all species may be available at the time of the overstock sale.

First come, first serve.



The District's Annual Conservation Tree and Shrub Program distribution site will be at the Monroe County ecopark facility. The ecopark provides county residents with an innovative facility that serves as a "one-stop drop-off" to dispose of and recycle their items. This facility is a partnership between Monroe County and Waste Management of NY.

**Regular Collection Hours:
Wednesday-Saturday
7:30 am to 1:00 pm**

The ecopark will be extending collection hours during the District's 2014 Tree and Shrub distribution, Thursday April 17th and Friday April 18th until 5:30 pm, and is open during normal business hours during the overstock sale on Saturday April 19th.

Compost mulch will also be available at the ecopark location during the Tree and Shrub distribution and overstock sale. This is a fantastic way to obtain excellent nutrients and cover for your newly purchased seedlings!

**For more information, visit the ecopark website at:
<http://www.monroecounty.gov/ecopark>**